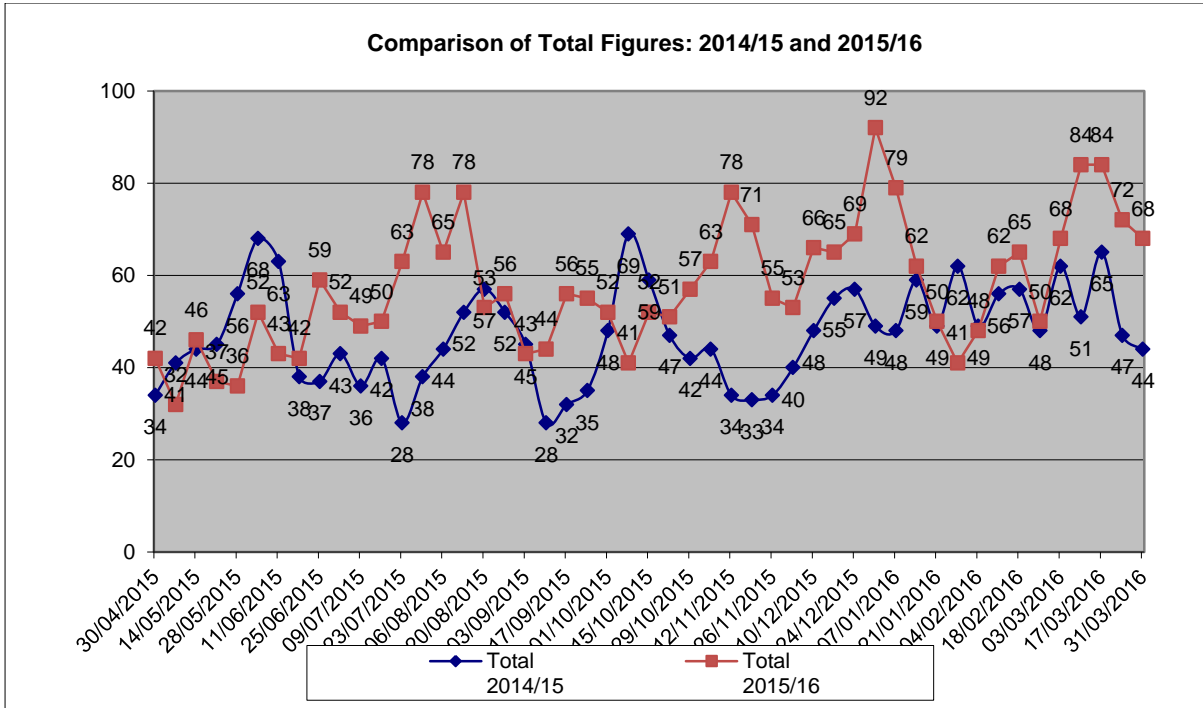
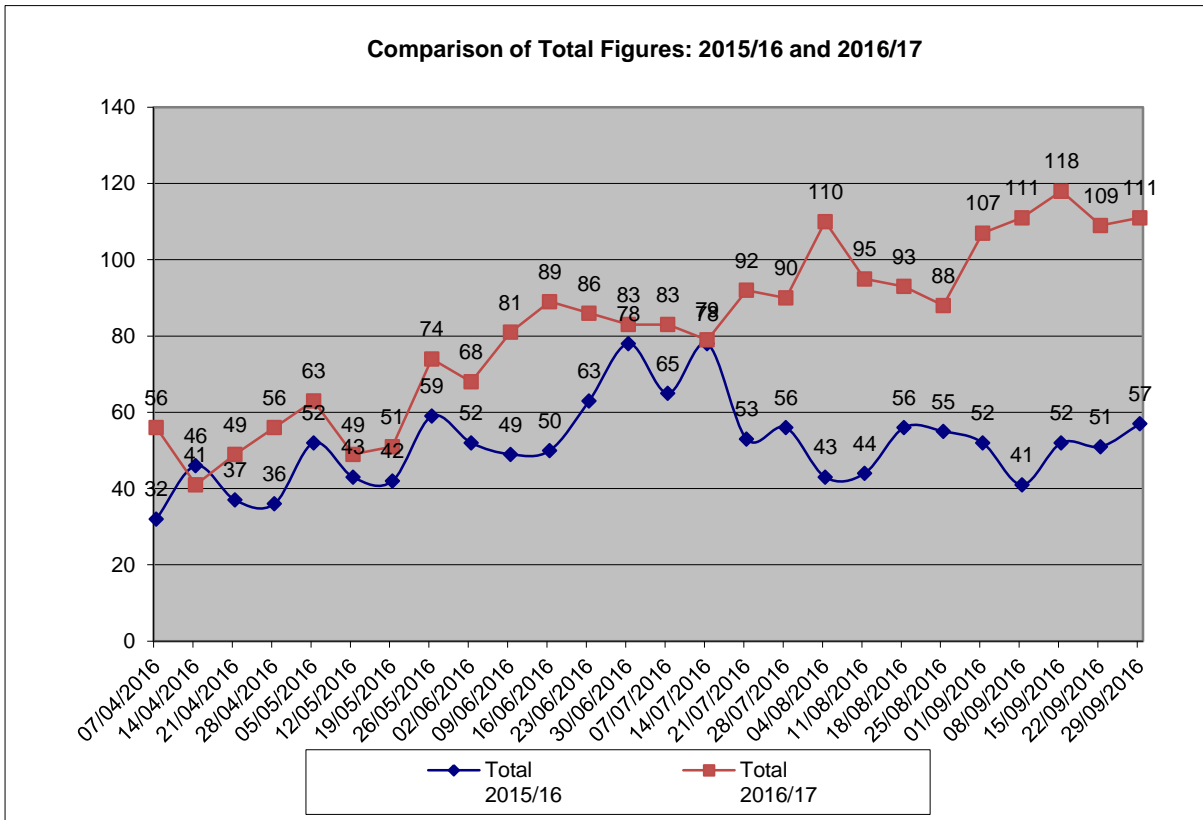


Delayed Transfer of Care data

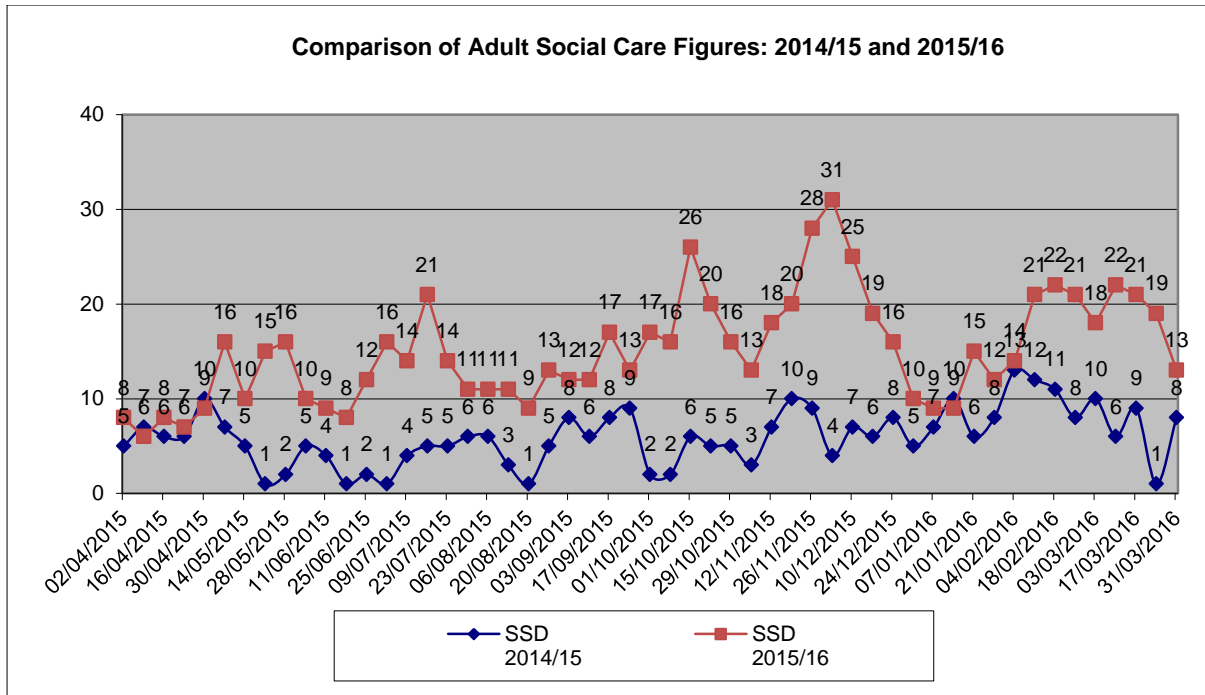
Comparison between 2014/15 and 2015/16, and 2015/16 and 2016/17 (April to September)



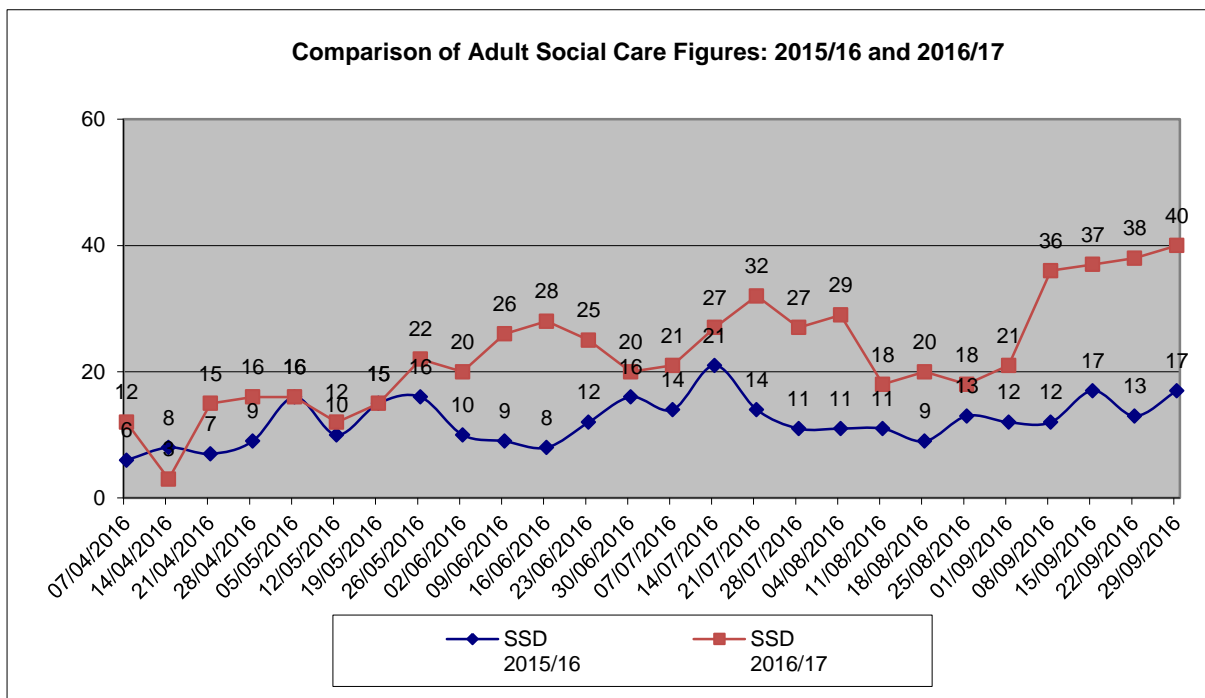
During 2014/15 there was an average 47.1 delays per week (as at the Thursday snapshot), in 2015/16 this increased to an average 58.7 delays per week



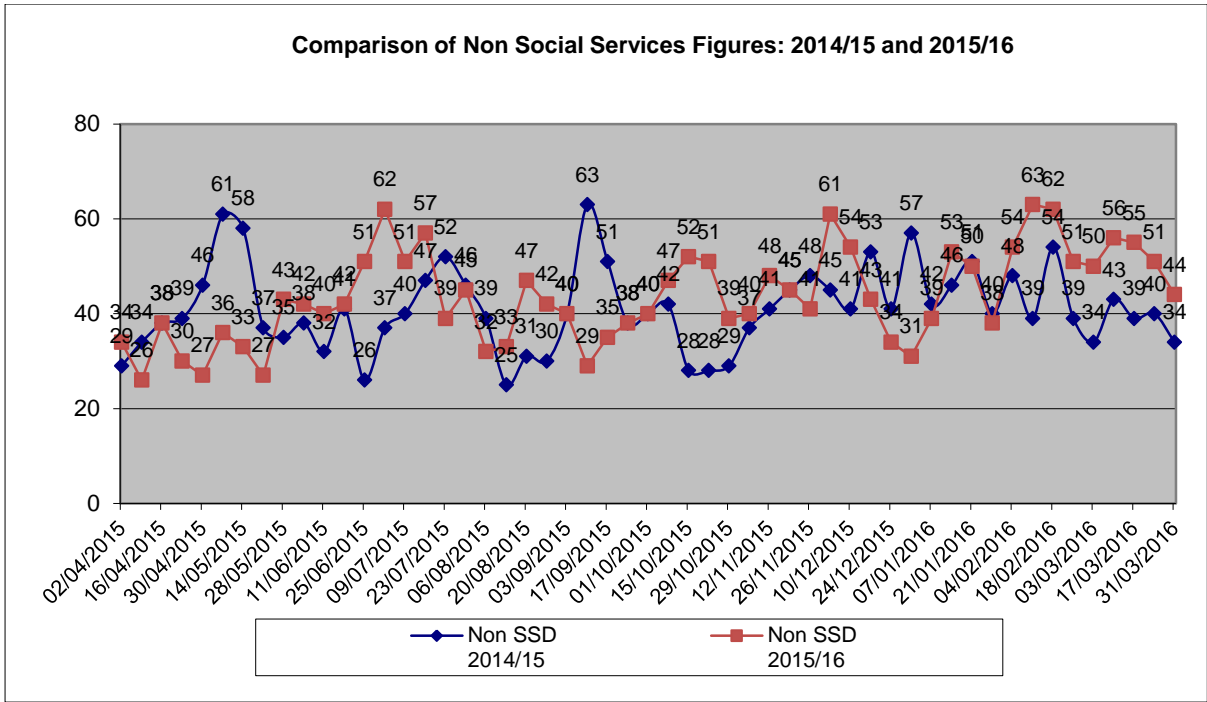
Between April and September 2015 there was an average 51.6 delays per week (as at the Thursday snapshot), for the same period in 2016 this increased to an average 82.0 delays per week



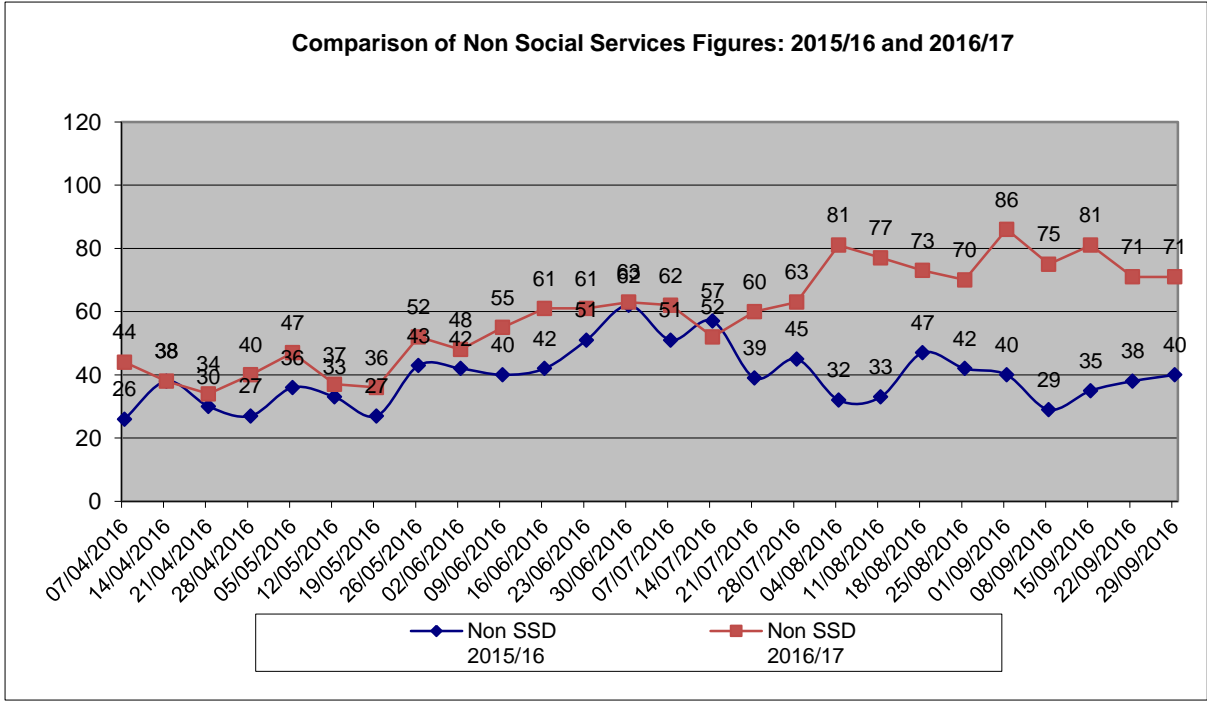
During 2014/15 there was an average 6.0 delays per week due to Adult Social Care (as at the Thursday snapshot), in 2015/16 this increased to an average 15.1 delays per week



Between April and September 2015 there was an average 12.2 delays per week due to Adult Social Care (as at the Thursday snapshot), for the same period in 2016 this increased to an average 22.8 delays per week

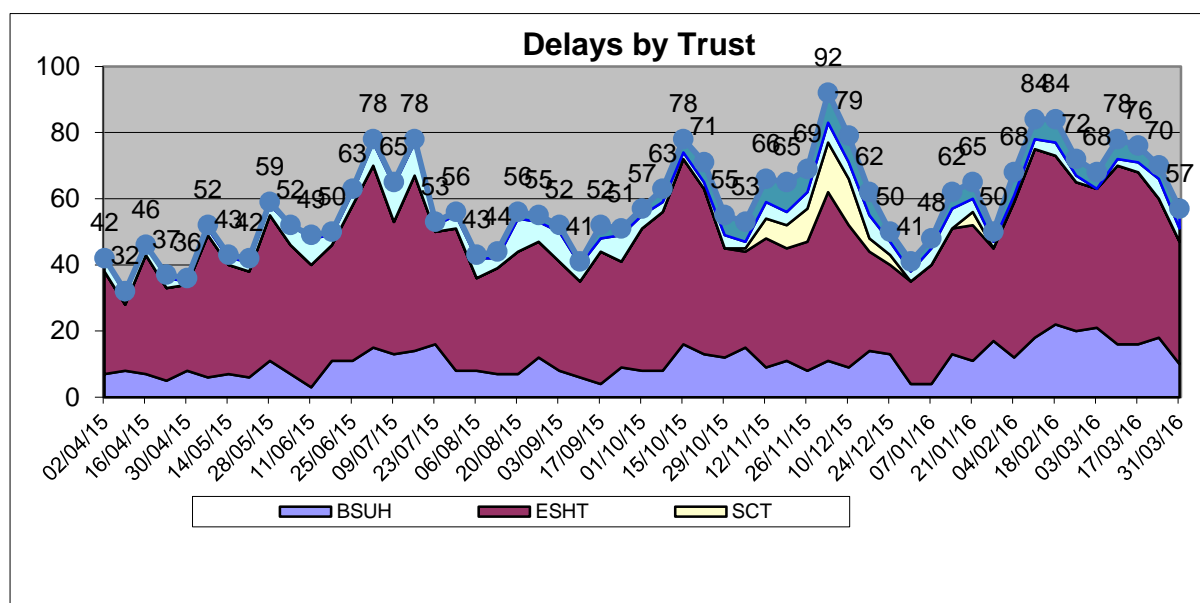


During 2014/15 there was an average 41.1 delays per week due to Non Social Services reasons (as at the Thursday snapshot), in 2015/16 this increased to an average 43.6 delays per week



Between April and September 2015 there was an average 39.4 delays per week due to Non Social Services reasons (as at the Thursday snapshot), for the same period in 2016 this increased to an average 59.2 delays per week

Delays by Trust 2015/16 and 2016/17 (April to September)

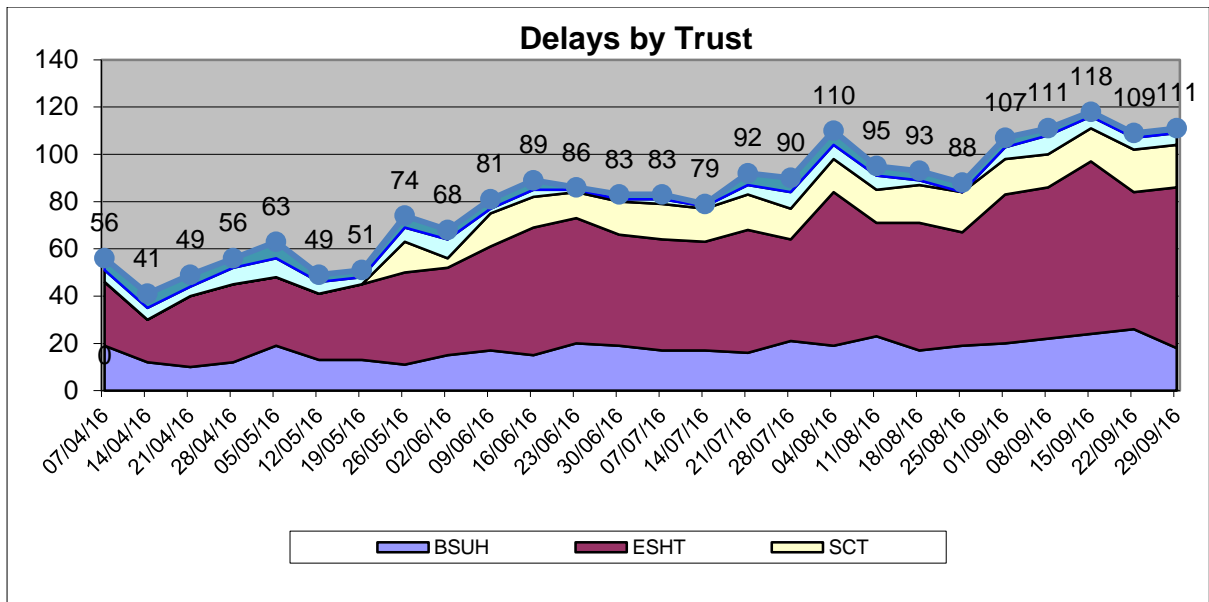


During 2015/16 there was an average:

- 11 delays a week across Brighton Sussex University Hospitals Trust (BSUH), an average of 18% of all delays per week
- 39 delays a week across East Sussex Hospitals Trust (ESHT), an average of 67% of all delays per week
- 3 delays per week across Sussex Community Trust (SCT), an average 2% of all delays per week
- 4 delays per week across Maidstone and Tunbridge Wells (MTW) an average 8% of all delays per week
- 3 delays per week across Sussex Partnership Foundation Trust (SPFT) an average 5% of all delays per week

It should be noted that the non-acute hospitals: Uckfield, Crowborough, Meadow Lodge and Lewes Intermediate Care Unit were under ESHT until 5th November 2015 when these hospitals were under Sussex Community Trust (SCT).

It should also be noted that between 31st December 2015 and 14th January 2016, and between 28th January and 31st March 2016, we were not sent any delayed discharge figures from SCT.

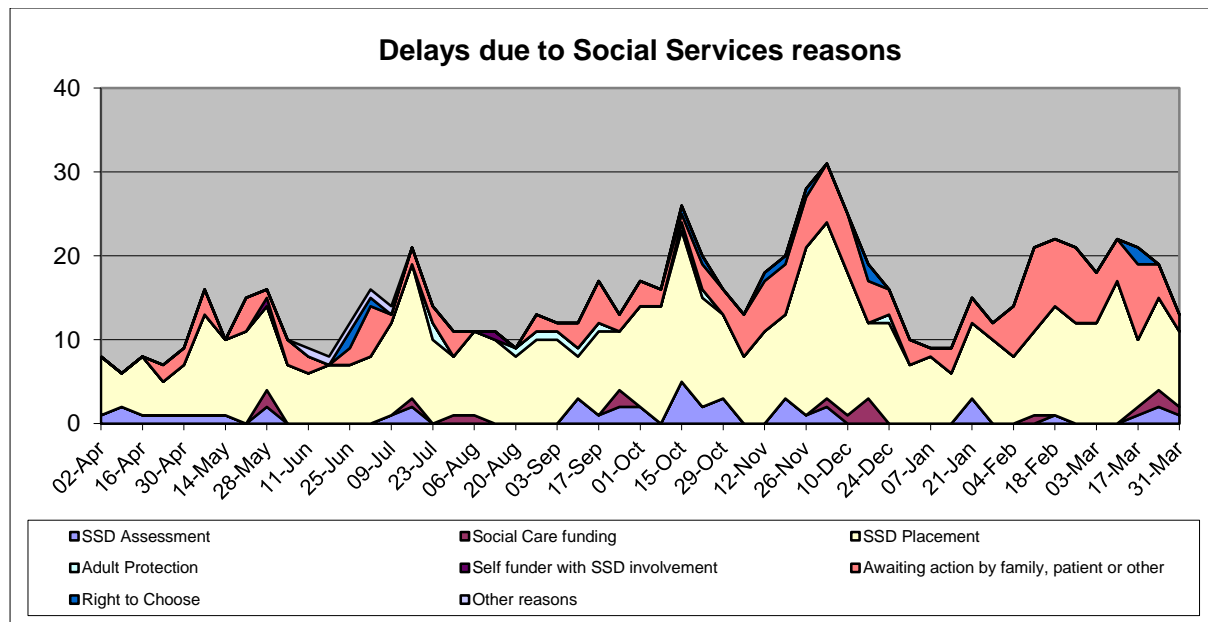


Between April and September 2016 there was an average:

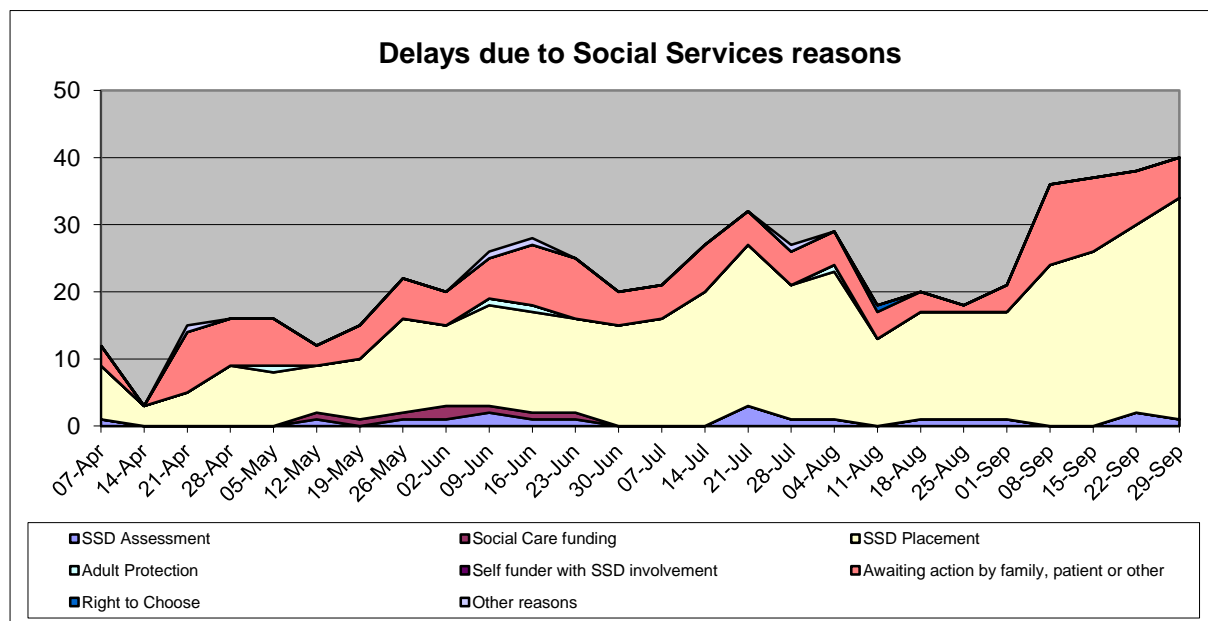
- 17 delays a week across Brighton Sussex University Hospitals Trust (BSUH), an average of 12% of all delays per week
- 46 delays a week across East Sussex Hospitals Trust (ESHT), an average of 56% of all delays per week
- 10 delays per week across Sussex Community Trust (SCT), an average 11% of all delays per week
- 4 delays per week across Maidstone and Tunbridge Wells (MTW) an average 6% of all delays per week
- 4 delays per week across Sussex Partnership Foundation Trust (SPFT) an average 5% of all delays per week

It should be noted that between 7th April and 19th May 2016, we were not sent any delayed discharge figures from SCT.

Reason for delay 2015/16 and 2016/17 (April to September)

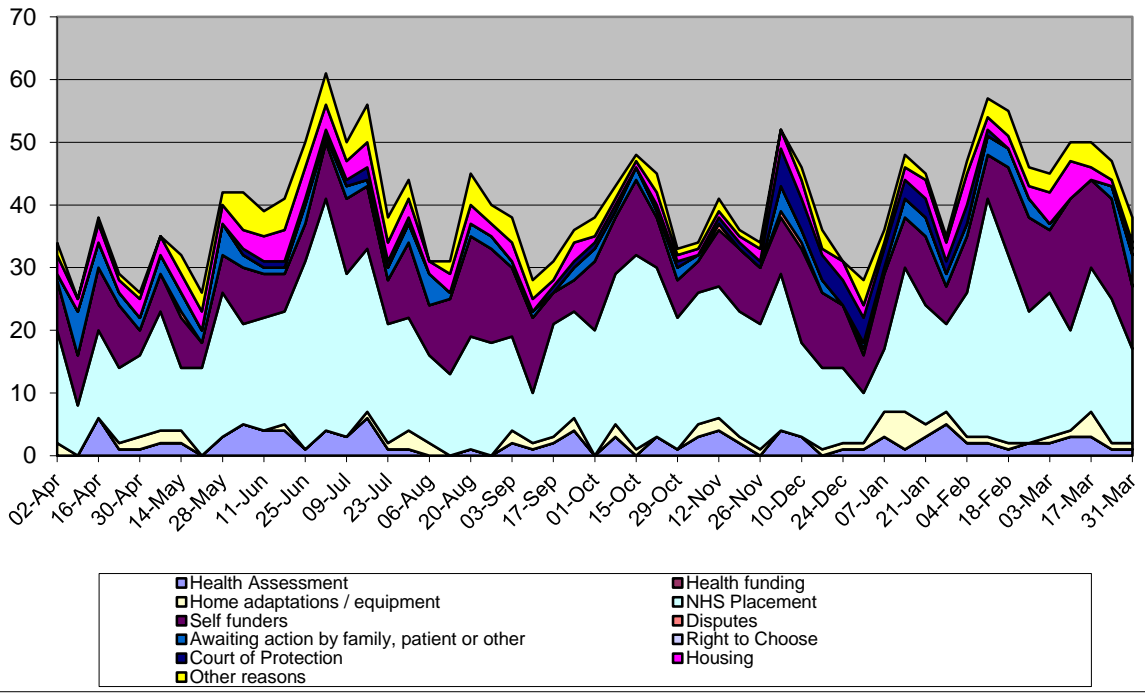


During 2015/16 the main reason for delays due to Adult Social Care, was those awaiting Social Services Placement – an average of 10 delays per week.



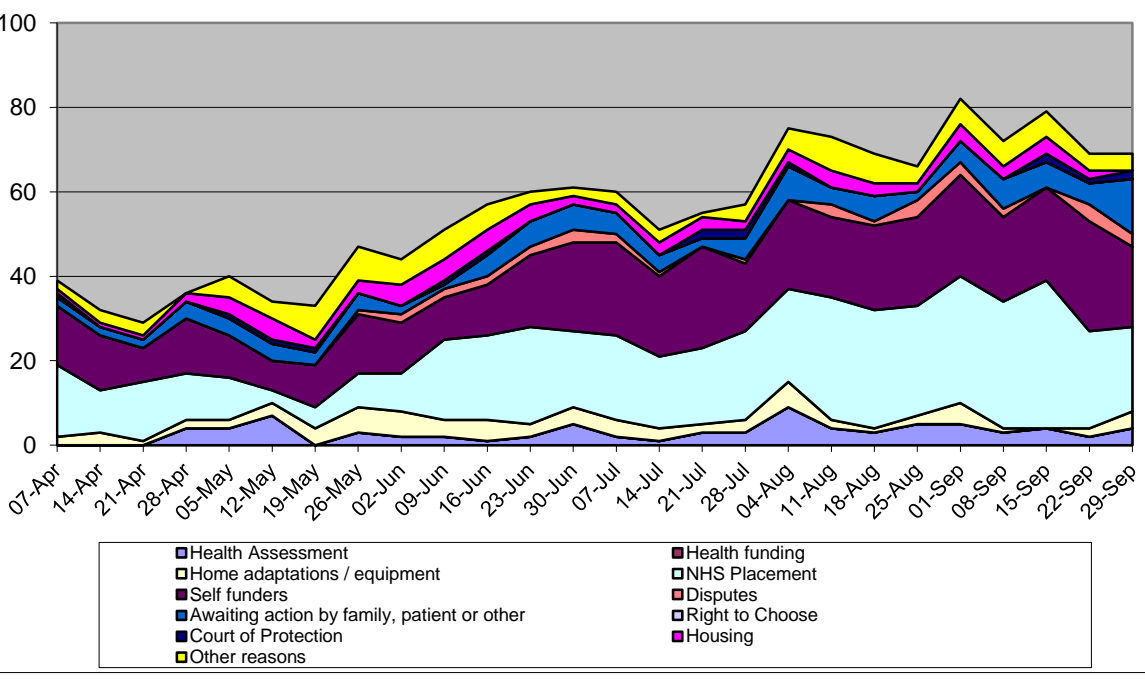
During 2016/17 (April to September) the main reason for delays due to Adult Social Care, was those awaiting Social Services Placement – an average of 16 delays per week.

Delays due to Non Social Services reasons

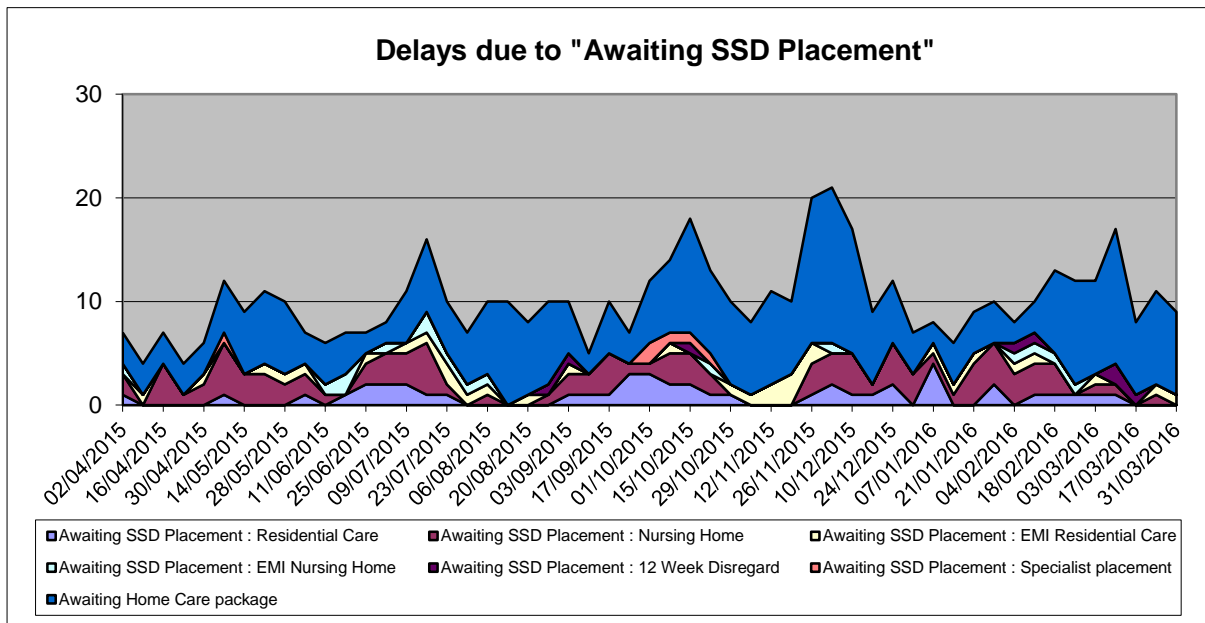


During 2015/16 the main reasons for delays due to Non Social Services reasons, was those awaiting NHS Placement – an average of 19 delays per week, and Self Funders – an average of 10 delays per week.

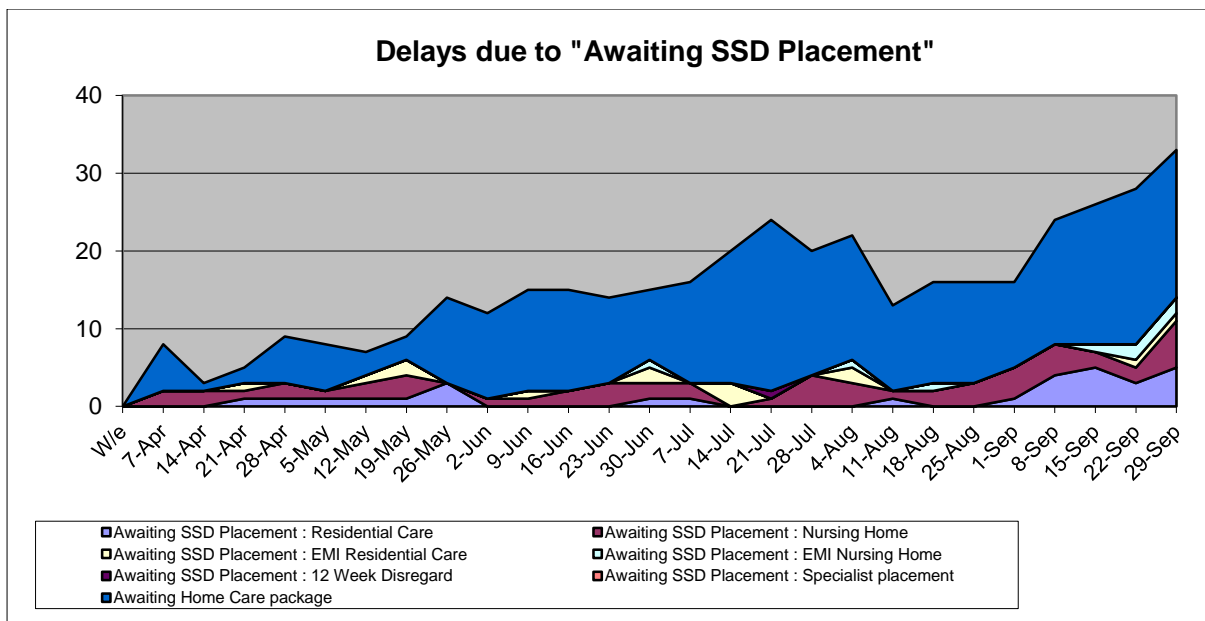
Delays due to Non Social Services reasons



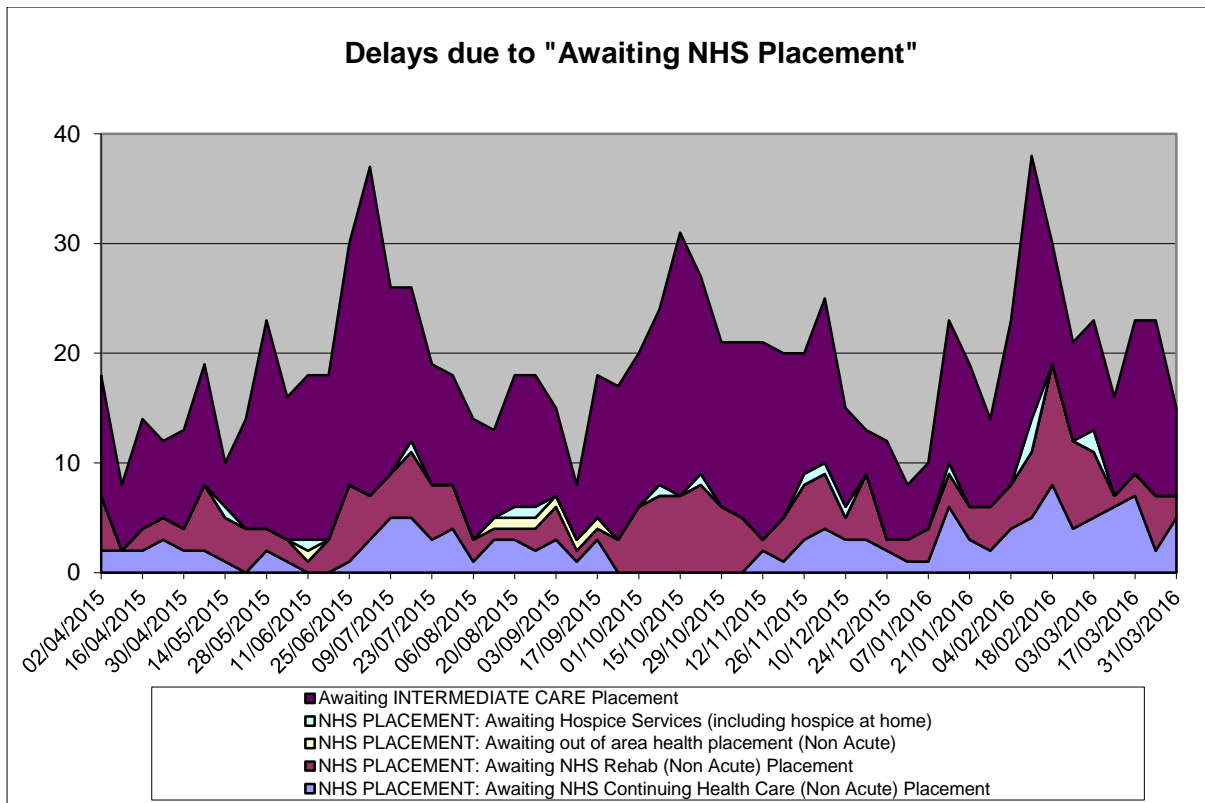
During 2016/17 (April to September) the main reasons for delays due to Non Social Services reasons, was those awaiting NHS Placement – an average of 19 delays per week, and Self Funders – an average of 17 delays per week.



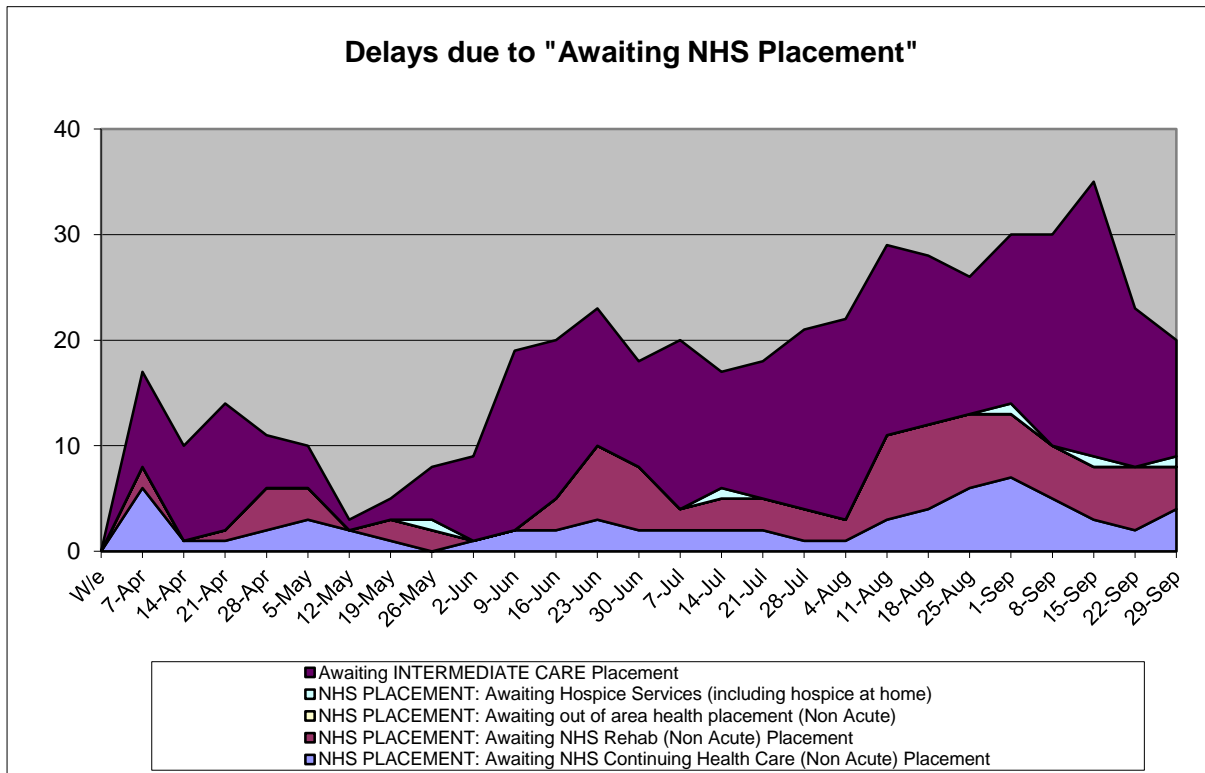
During 2015/16 of those awaiting Social Services Placement, the main reason was those awaiting a homecare package – an average of 6 delays per week.



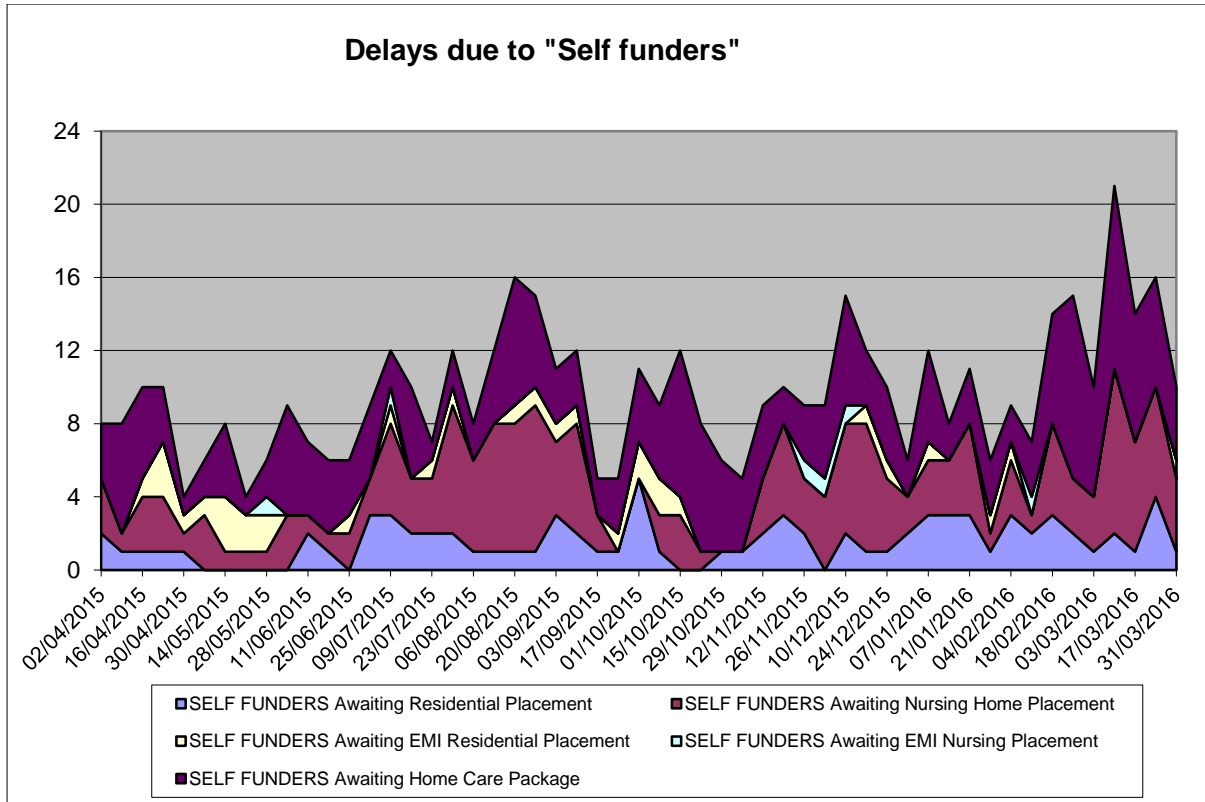
During 2016/17 (April to September) of those awaiting Social Services Placement, the main reason was those awaiting a homecare package – an average of 12 delays per week.



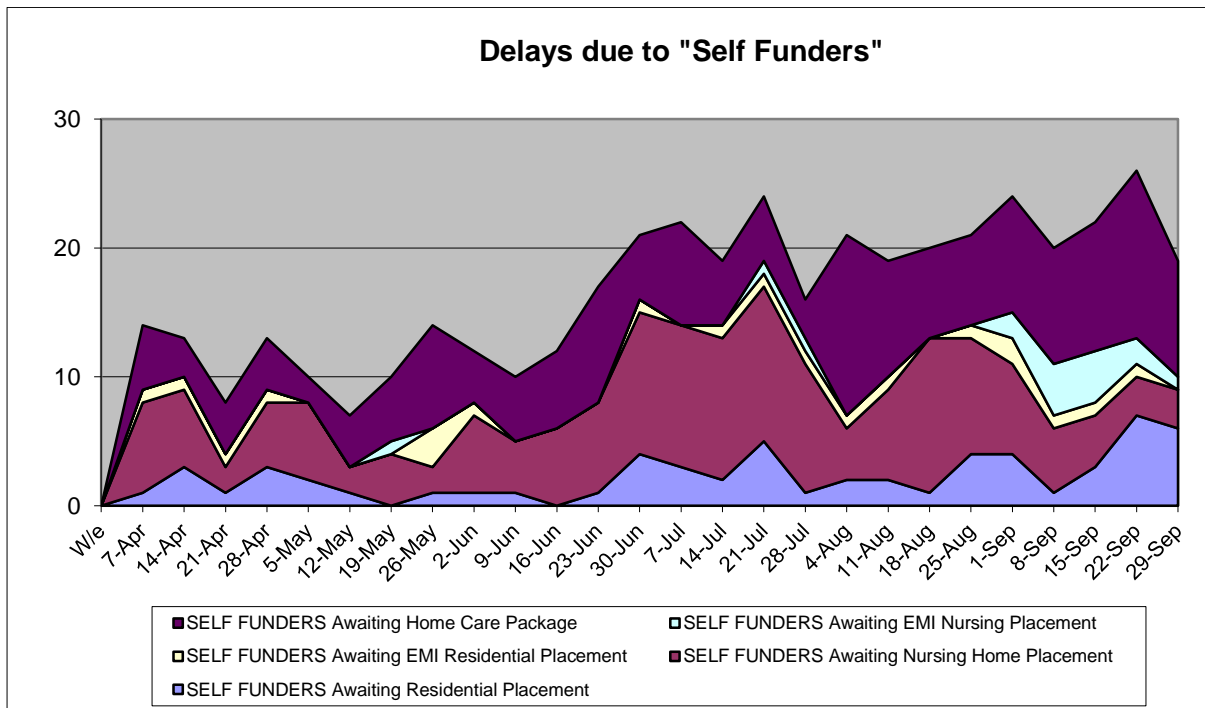
During 2015/16 of those awaiting NHS Placement, the main reason was those awaiting Intermediate Care – an average of 12 delays per week.



During 2016/17 (April to September) of those awaiting NHS Placement, the main reason was those awaiting Intermediate Care – an average of 12 delays per week.



During 2015/16 of Self Funders delayed, the main reasons were those awaiting a home care package– an average of 4 delays per week, and those awaiting a nursing home placement – an average of 3 delays per week.



During 2016/17 (April to September) of Self Funders delayed, the main reasons were those awaiting a home care package– an average of 7 delays per week, and those awaiting a nursing home placement – an average of 6 delays per week.